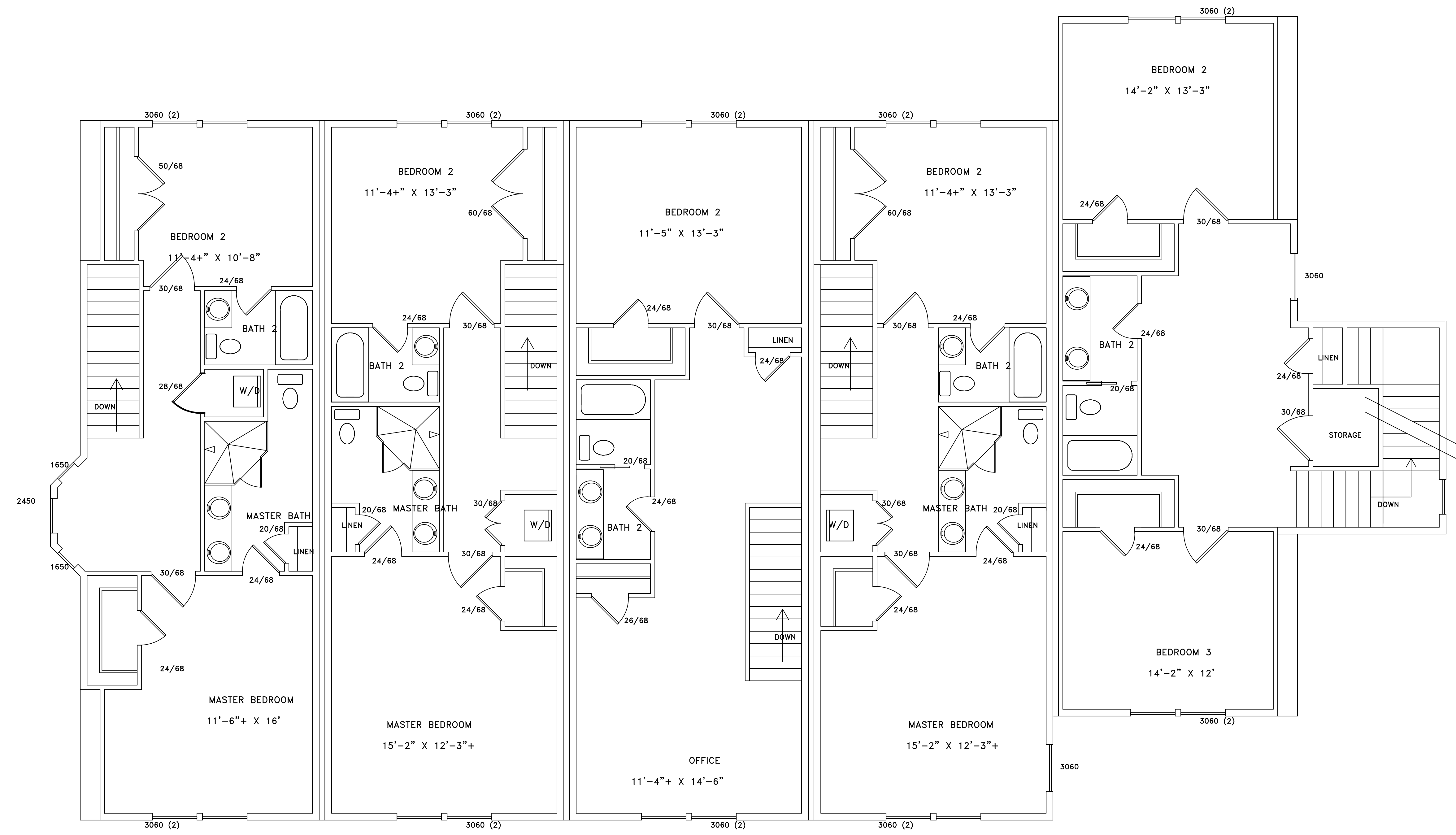


FRONT OF BUILDING



<u>UNIT #100</u>	<u>UNIT #98</u>	<u>UNIT #96</u>	<u>UNIT #94</u>	<u>UNIT #92</u>
2nd FLOOR HTD: 745 SF	2nd FLOOR HTD: 711 SF	2nd FLOOR HTD: 706 SF	2nd FLOOR HTD: 708 SF	3rd FLOOR HTD: 770 SF

BACK OF BUILDING

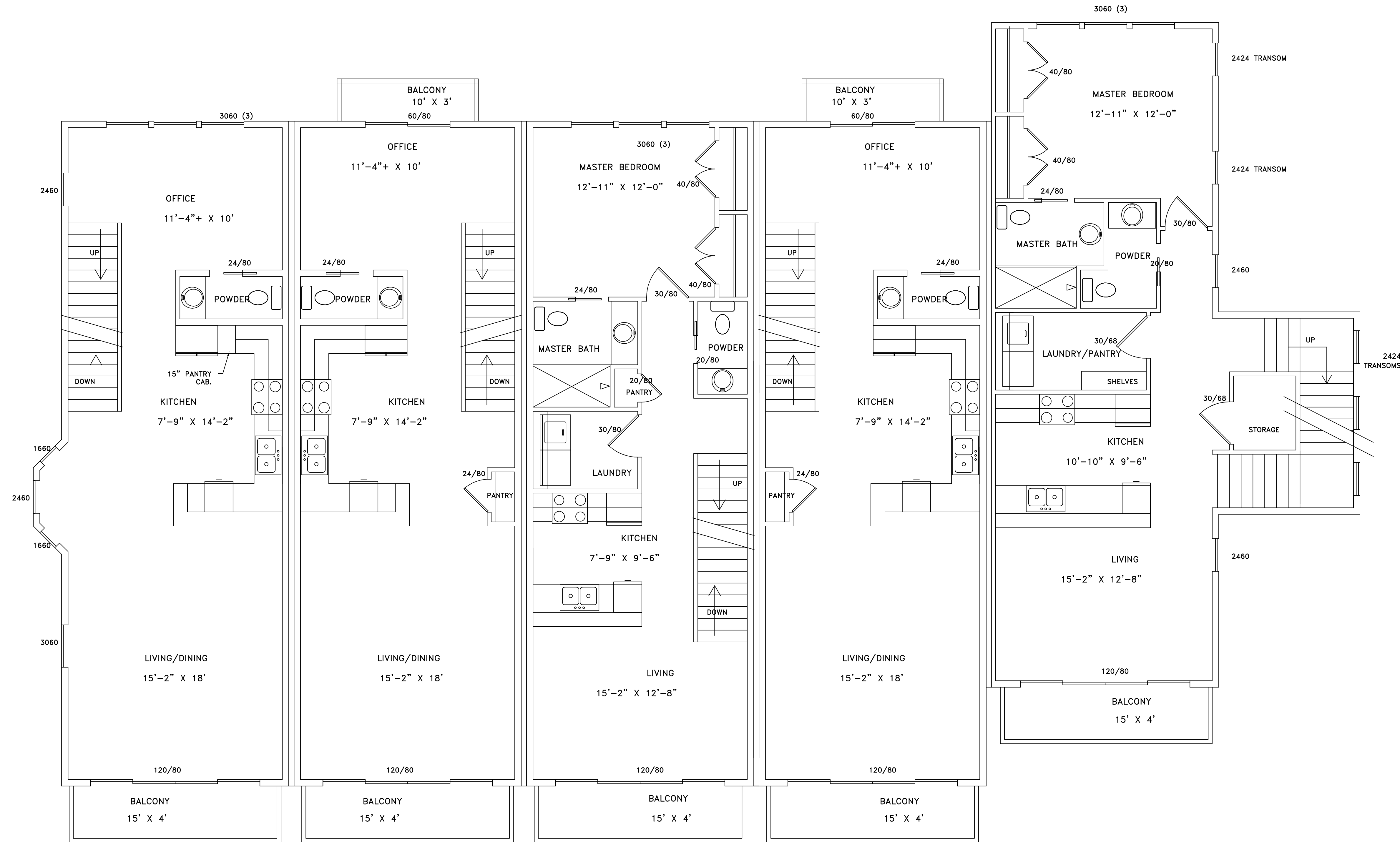
Susan S. Glasner
 PROFESSIONAL RESIDENTIAL DESIGNER, L.L.C.
 1613 PARIS AVENUE #206, PORT ROYAL, S.C.
 843-271-2428 PORT ROYAL LIC. #2513

3rd FLOOR PLAN

DATE: 10/07/21 SCALE: 1/4" = 1'-0"
 DRAWN BY: *Susan S. Glasner* A.I.
 PROFESSIONAL MEMBER, AMERICAN INSTITUTE OF BUILDING DESIGNERS

VILLAGE AT BATTERY CREEK
 BUILDING 10
 PORT ROYAL, S.C.

FRONT OF BUILDING



UNIT #100

2nd FLOOR HTD: 717 SF

UNIT #98

2nd FLOOR HTD: 701 SF

UNIT #96

2nd FLOOR HTD: 701 SF

UNIT #94

2nd FLOOR HTD: 701 SF

UNIT #92

2nd FLOOR HTD: 805 SF

BACK OF BUILDING

Susan J. Glasner
 PROFESSIONAL RESIDENTIAL DESIGNER, L.L.C.
 1613 PARIS AVENUE #206, PORT ROYAL, S.C.
 843-271-2428 PORT ROYAL LIC. #2513

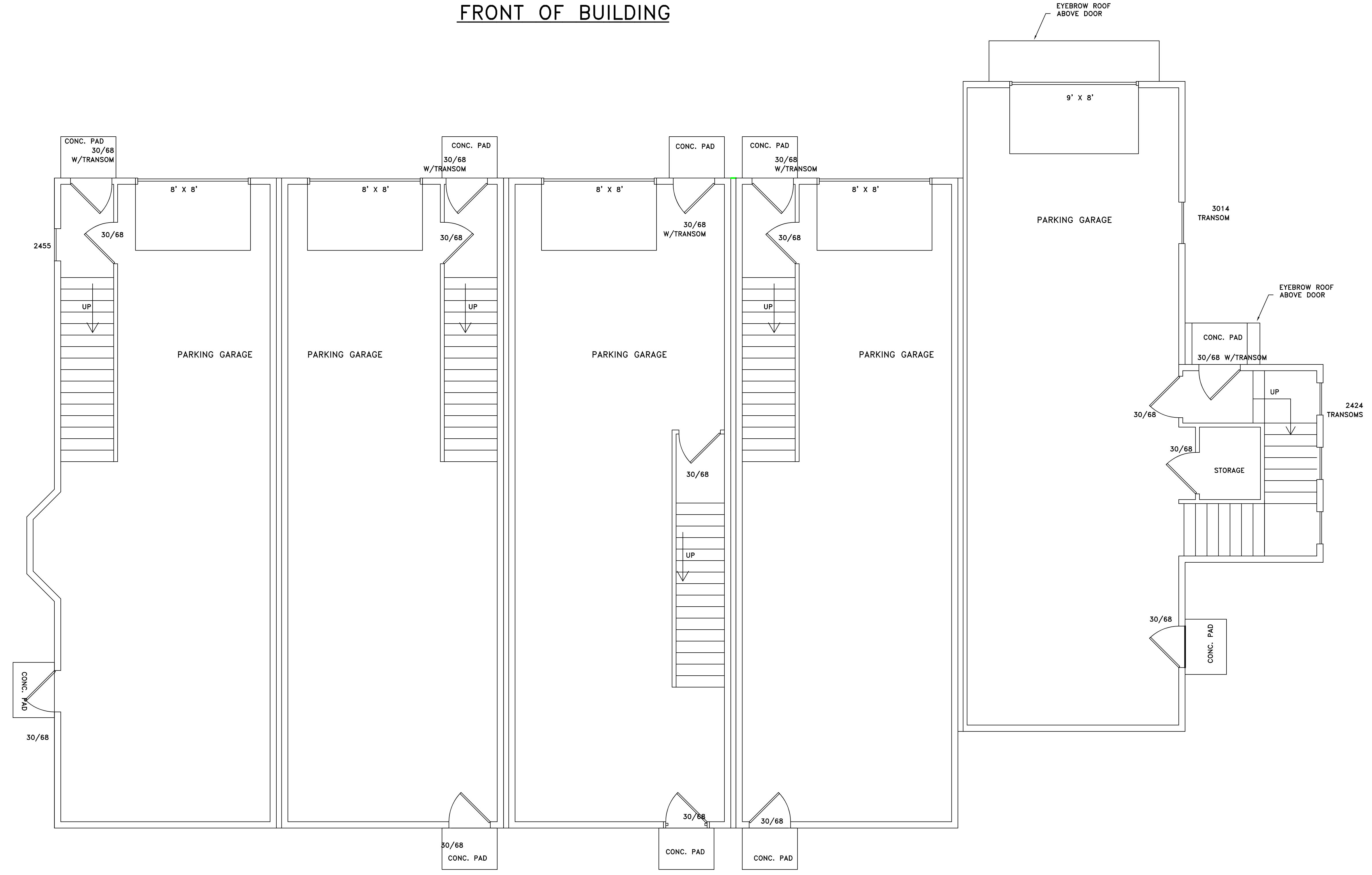
2nd FLOOR PLAN

DATE: 10/07/21 SCALE: 1/4" = 1'-0"

DRAWN BY: Susan J. Glasner
 PROFESSIONAL MEMBER, AMERICAN INSTITUTE OF BUILDING DESIGN

VILLAGE AT BATTERY CREEK
 UNITS 92, 94, 96, 98 & 100
 PORT ROYAL, S.C.

FRONT OF BUILDING



UNIT #100
 1st FLOOR HTD: 88 SF
 1st FLOOR UNHEATED: 681 SF

UNIT #98
 1st FLOOR HTD: 88 SF
 1st FLOOR UNHEATED: 670 SF

UNIT #96
 1st FLOOR HTD: 79 SF
 1st FLOOR UNHEATED: 678 SF

UNIT #94
 1st FLOOR HTD: 88 SF
 1st FLOOR UNHEATED: 669 SF

UNIT #92
 1st FLOOR HTD: 117 SF
 1st FLOOR UNHEATED: 783 SF

BACK OF BUILDING

Susan J. Glasner
 PROFESSIONAL RESIDENTIAL DESIGNER, L.L.C.
 1613 PARIS AVENUE #206, PORT ROYAL, S.C.
 843-271-2428 PORT ROYAL LIC. #2513

1st FLOOR PLANS
 DATE: 10/07/21 SCALE: 1/4" = 1'-0"
 DRAWN BY: *Susan J. Glasner*
 PROFESSIONAL MEMBER, AMERICAN INSTITUTE OF BUILDING DESIGNERS

VILLAGE AT BATTERY CREEK
 UNITS 92, 94, 96, 98 & 100
 PORT ROYAL, S.C.